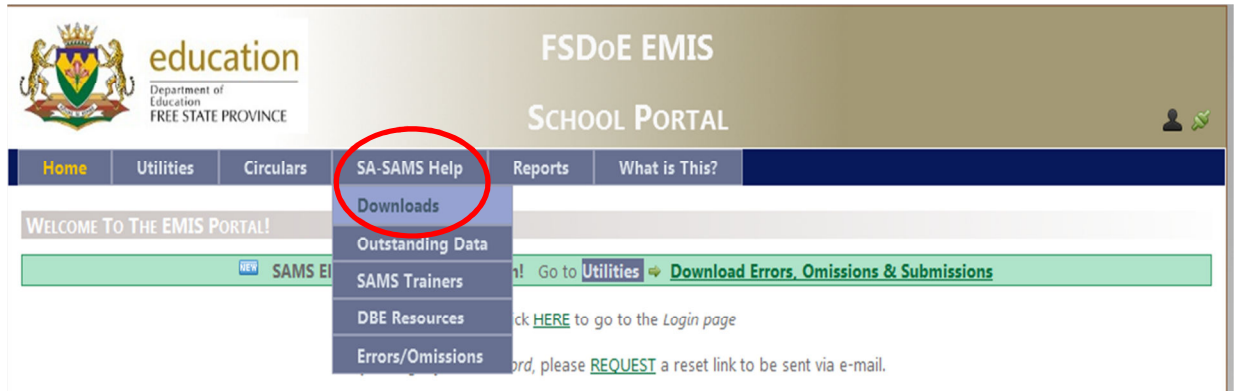


How to install SA-SAMS Setup

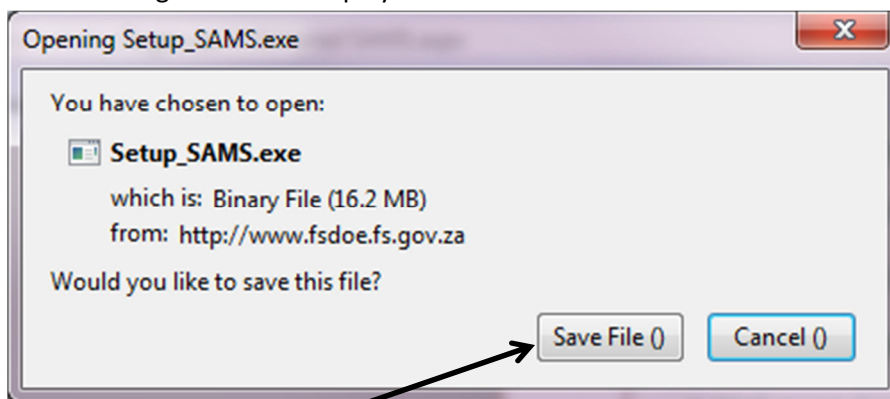
1. Open the **EMIS Portal** website(<http://www.fsdoe.fs.gov.za/EMISPortal>).
2. Click on **SA-SAMS Help** and click on **Downloads**.



3. Click on **SA-SAMS First Time Installer(Setup)**.

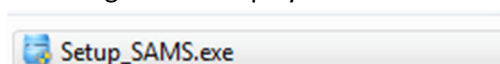


4. The following screen will display:



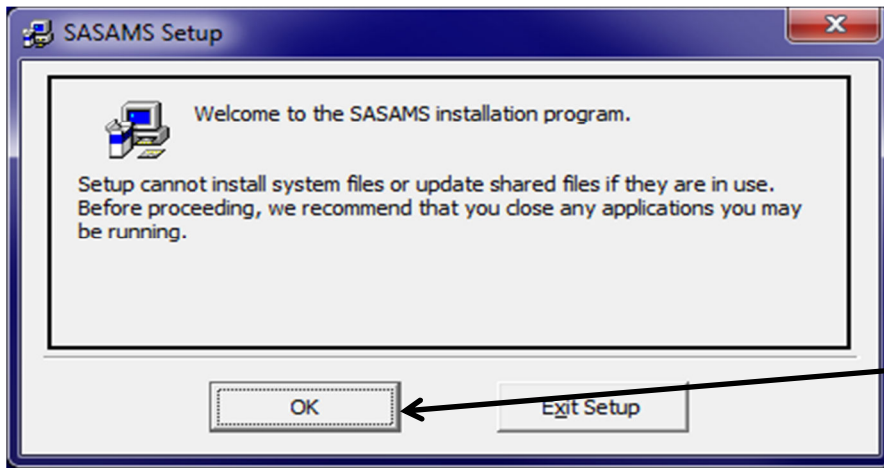
Click on the **Save** button to download.

5. Default folder to save the files is **Downloads**. Go to **Downloads** on Windows Explorer. The following file will display:

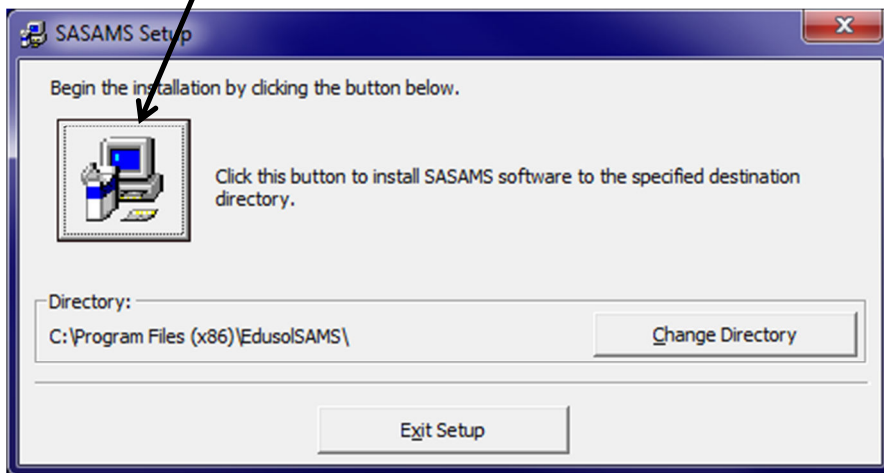


6. Double click on the file **Setup_SAMS.exe** to install.

7. Click on the **OK** button.

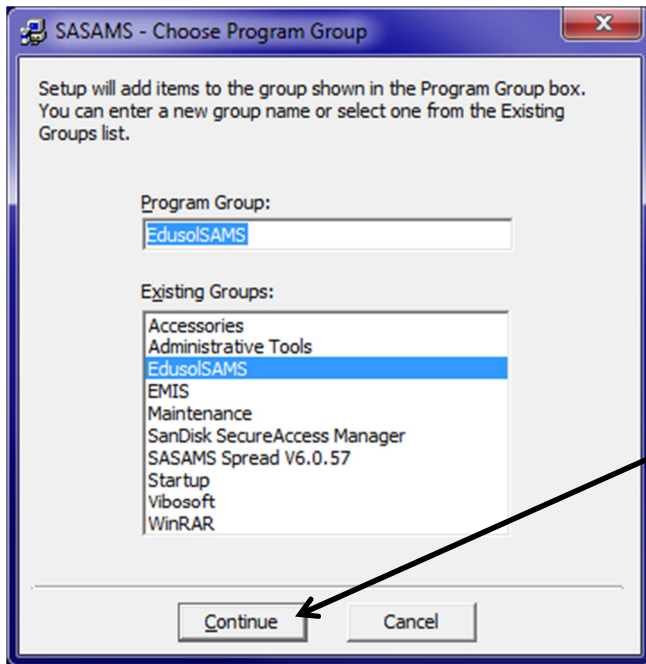


8. Click on the **Computer icon** button.

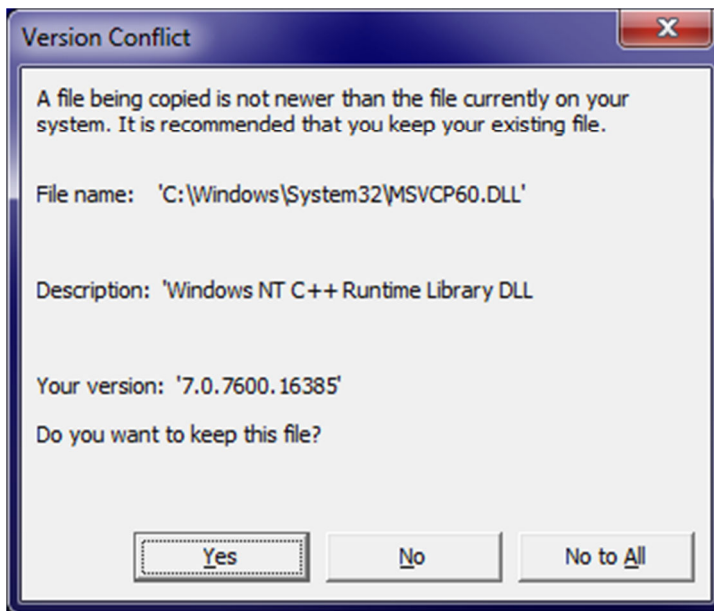


9. Click on the **Continue** button.

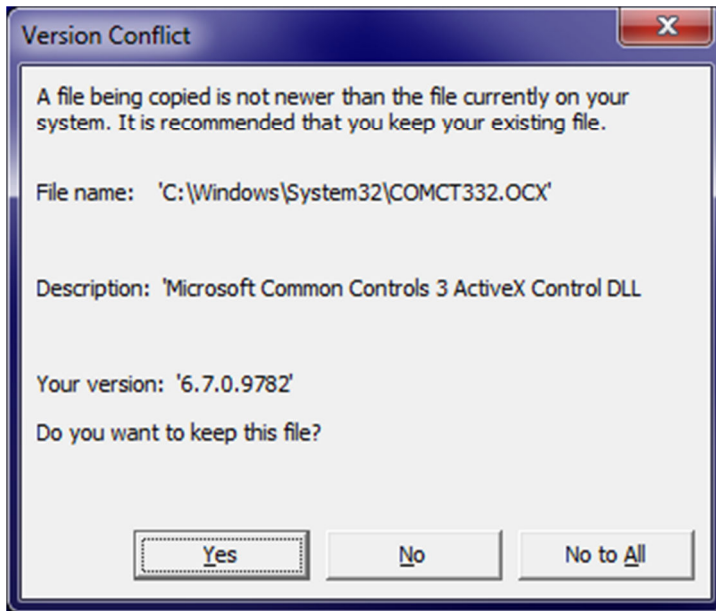




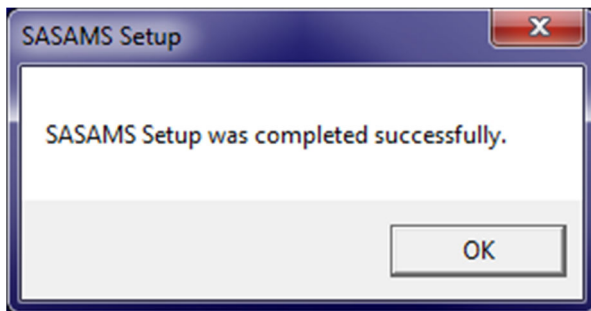
10. Click on the **Yes** button.



11. Click on the **Yes** button.



12. Click on the **OK** button.



NOTE: SA-SAMS latest Patch/Version should be installed on your computer. Refer to "How to install the latest patch" on the EMIS Portal under Manuals and Guides.